

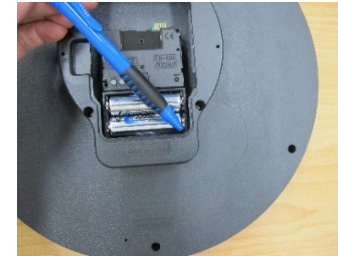
WiFi clock (ver A) user manual

1. First Time Setup:

(A) Power on:



- Insert two batteries included with correct polarity.

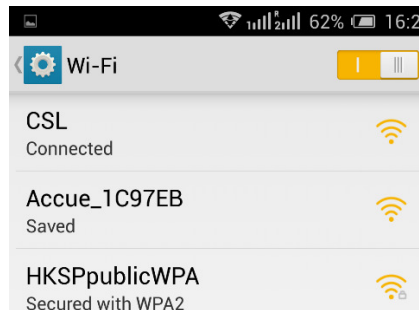


- The LED blinks (you can see the reflected light inside the case), and the 3 hands are moving towards 12 o'clock position.

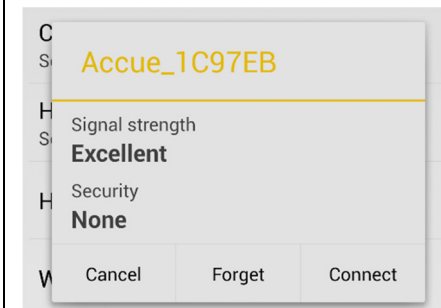
(B) Connect the WiFi clock and your mobile phone:



- Press and hold the M.SET button for 3 seconds, no matter the hands are moving or not.
- The LED stop blinks and remains on, it shows that the clock is ready to connect to the phone.

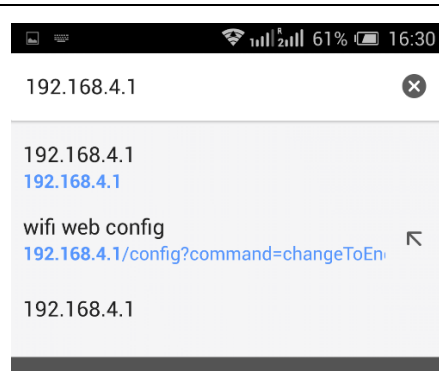


- In the WiFi setting of your mobile phone, select the device labelled "Accue-XXXXXX". (where XXXXXX is the clock's device ID)

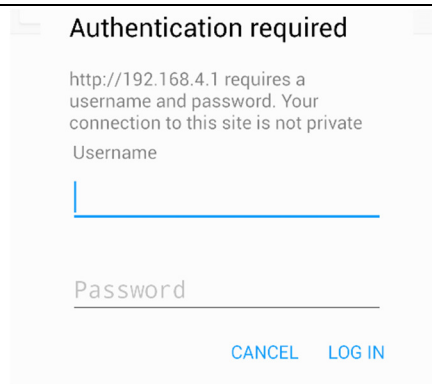


- Press "Connect". Then the mobile phone will going to connect to the clock.

(C) Enter the web page of the clock to begin setup:



- In your mobile phone , open the web browser. (Any browser is OK.)
- Enter the IP address
192.168.4.1
In the URL box and press ENTER.



- Type the default value “admin” in both username and password box.
- Press LOG IN to proceed.

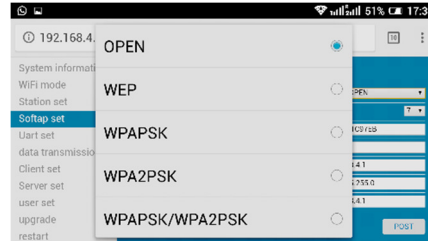


Press “change to English” if needed.

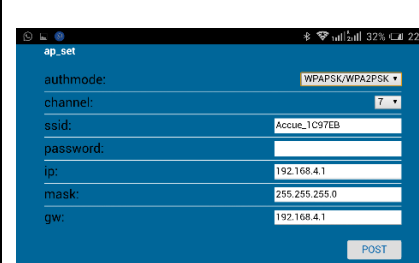
(D) SoftAP setup:



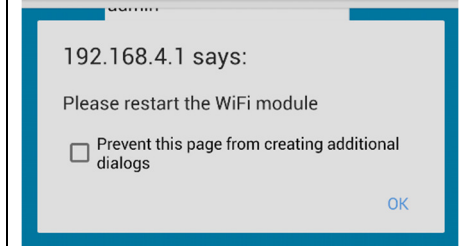
- Select “Softap set.” In the left menu pane
- In the right content pane, change the “authmode” first by pressing the pull down menu. Now it should be showing the choice “OPEN”.



- Select “WPAPSK/WPA2PSK”. This gives the best security.



- Enter the password (at least 8 characters). This is needed to connect the mobile phone next time in step (B).
- Please **DO NOT CHANGE** the SSID “Accue_xxxxxx”.
- Then press the POST button to store the changes.

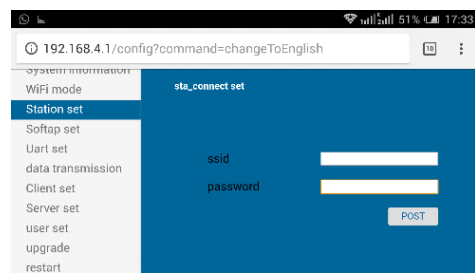


- Press OK to proceed
- The WiFi connection between the clock and your mobile phone will be lost after 5-10 seconds ⁽¹⁾
- Then, you need to reconnect again by following step (B) and (C)
- This time you will need to enter your new set of password

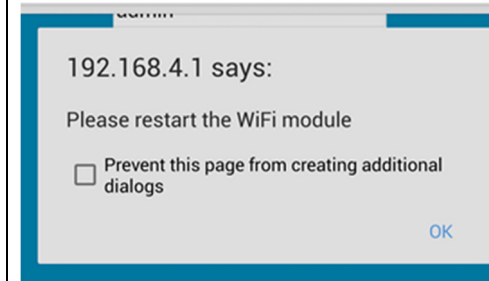
Remarks :

1. Some models of mobile phone may not disconnect at this moment. So just proceed step (E).

(E) Station setup:

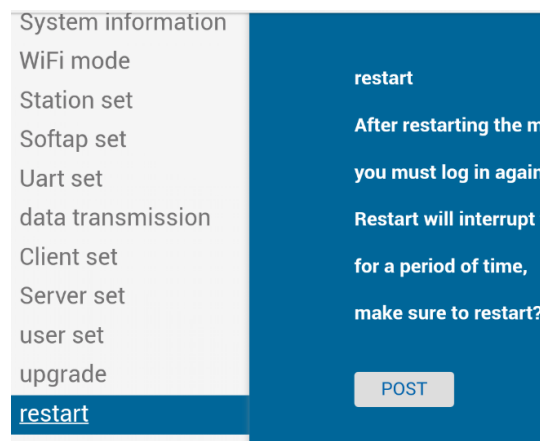


- Select the “Station set” in left menu pane.
- Enter the SSID and the password of your WiFi router in the right menu pane.
- Then press POST button.

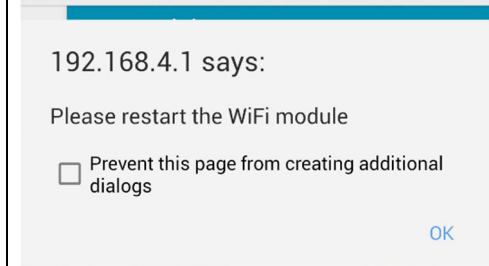


- Press OK.
- Then, go to next step to RESTART.

(F) Restart:



- Select “restart” on the left menu pane.
- Press POST button in the right content pane to restart.



- Press OK to confirm restart.
 - The clock will then get the time from the internet.
 - In around 5~10 seconds,
 - The LED will go off, and
 - The hands will begin to go to the correct time position.
- (In case of connection failed, press REC button in the clock to retry. OR check the configuration by following STEP B to E)